

2016

ALTERNATIVE CALCULATION METHOD APPROVAL MANUAL

FOR THE 2016 BUILDING
ENERGY EFFICIENCY
STANDARDS

TITLE 24, PART 6, AND ASSOCIATED
ADMINISTRATIVE REGULATIONS
IN PART 1.



JUNE 2015
CEC-400-2015-039-CMF

CALIFORNIA ENERGY COMMISSION
Edmund G. Brown Jr., Governor

CALIFORNIA ENERGY COMMISSION

Robert B. Weisenmiller, Ph.D.
Chair

Commissioners
Karen Douglas, J.D.
Andrew McAllister
David Hochschild
Janea A. Scott

Dee Anne Ross
Peter Strait
Project Managers

Eurlyne Geiszler
Manager
Building Standards Office

David Ashuckian
Deputy Director
Efficiency Division

Robert P. Oglesby
Executive Director

TABLE OF CONTENTS

Table of Contents ii

1. Approval of Compliance Software 1

1.1 Application Checklist 1

1.1.1 Compliance Software Vendor Certification Statement 1

1.1.2 Computer Runs and Summary Sheets 1

1.1.3 User Manual and Changelog 1

1.1.4 Compliance Software 1

1.1.5 Application Fee 2

1.2 Approval of Received Applications 2

1.2.1 Approval Process 2

1.2.2 When Approval Is Not Required 3

1.3 Compliance Manager Version Updates 3

1.3.1 Major Changes to the Compliance Manager 3

1.3.2 Minor Changes to the Compliance Manager 4

1.4 Changes that Do Not Require Approval 4

1.4.1 Functionality Corrections to the Compliance Manager 4

1.4.2 Changes Made by Compliance Software Vendors 5

1.5 Expired Approval and Decertification 5

1.5.1 Expiring Approval 5

1.5.2 Decertification 5

1.5.3 Initiating a Decertification Proceeding 6

1.6 Compliance Software Tests 7

1.6.1 Alternate Compliance Software Tests 7

1.7 Approval of New Exceptional Methods 7

2 Compliance Manager Capabilities 8

2.1 Standard Design 8

2.2 Time Dependent Valuation 9

2.3 Climate Zone 9

2.4 Reference Manual 10

3 User Manual 11

3.1 Software Capabilities 11

3.2 Preparing Basic Input 11

3.3 Checklist for Compliance Submittal 11

3.4 Sample Compliance Documentation 11

3.5 Compliance Statement 12

3.6 Related Publications 12

APPENDIX A – RESIDENTIAL CERTIFICATION TESTS

APPENDIX B – NONRESIDENTIAL CERTIFICATION TESTS

ABSTRACT

This manual explains the requirements for approval of Alternative Calculation Methods (ACMs), which include compliance software. Compliance software is used to demonstrate compliance with the performance approach to the 2016 Building Energy Efficiency Standards for Residential and Nonresidential Buildings (Standards)¹. The residential requirements of this document apply to buildings covered by the low-rise residential provisions of the Standards. All building types other than low-rise residential that are within the scope of the Standards are covered by the nonresidential requirements of this document.

The approval procedure for ACM compliance software is one of self-testing and self-certification by the software vendor. The vendor conducts the specified tests, evaluates the results and certifies in writing that the compliance software passes the tests. The California Energy Commission performs spot checks and can require additional tests to verify that the proposed compliance software is suitable for compliance purposes. The vendor is required to develop a user manual explaining how to use the program to show compliance with the Standards. The user manual must include a tutorial, user guidance for each program input, and an index. The manual is checked by the Energy Commission for accuracy and ease of use.

Compliance software that implements the Standards must use the energy simulation and compliance rule implementation software developed by the Energy Commission. This open source software, called the Compliance Manager in this document, is made available at no cost to potential compliance software vendors. The ACM tests submitted by the vendor confirm and document that the Compliance Manager is successfully integrated into the vendor software.

Section 1 presents the general requirements for compliance software. 2 provides basic details required by the Compliance Manager in establishing the standard design energy use of residential and nonresidential buildings. The Residential and Nonresidential ACM Reference Manuals are documents that are developed and maintained by the Energy Commission to document in greater detail the building performance modeling calculations implemented in the Compliance Manager software. These reference manuals are approved by the Energy Commission and updated as necessary to resolve issues identified during implementation. 3 describes the required content of the user manuals provided by software vendors for their compliance products. The certification tests that compliance software must pass in order to receive approval are documented in detail in Appendix A for low-rise residential buildings and Appendix B for nonresidential buildings.

¹ Cal. Code Regs., tit. 24, pt. 6, and associated administrative regulations in pt. 1, ch. 10.

1. Approval of Compliance Software

1.1 *Application Checklist*

The following is a list of the items that must be included in an application package for compliance software approval by the Energy Commission.

1.1.1 Compliance Software Vendor Certification Statement

The compliance software vendor shall include a signed, dated statement certifying under penalty of perjury under the laws of the State of California that the vendor's compliance software integrates the current version of the Compliance Manager and successfully passes the tests specified in Appendix A or B that are applicable to the software seeking approval.

1.1.2 Computer Runs and Summary Sheets

The compliance software vendor shall provide copies of the input files for the computer runs related to the tests required by Section 1.1.2, which includes, but is not limited to, all input and output files, the file necessary for transferring information to a HERS provider as generated by the software, and a summary sheet of the compliance results from all required computer runs. These files shall be provided to the Energy Commission in an electronic format. These files shall demonstrate that the criteria in Section 10-109 are met, as required by Sections 10-109(b)2B and 10-109(c)2.

Full approval of new software and approval following major compliance manager updates requires completion of all tests applicable to a program's capabilities. Minor compliance manager updates require completion of only the tests relevant to the update. The Energy Commission shall, when it publishes a minor update, specify the tests determined to be relevant to the update.

1.1.3 User Manual and Changelog

An electronic copy of the user manual specified in Section 2 shall be included with the approval application. This document shall contain a description of the functional and analytical capabilities of the software, as required by Section 10-109(b)2A.

Applications for approval of an updated version of currently approved software shall also include a complete list of changes to the software.

1.1.4 Compliance Software

An executable version of the compliance software for which approval is sought shall be provided for the Energy Commission's use. The software must include the ability to generate the file necessary to register the compliance documentation with a HERS provider.

1.1.5 Application Fee

An application fee is required to cover the costs of evaluating an application when the software has not previously been approved by the Energy Commission, or for the first approval following an update to the Title 24, Part 6, Building Energy Efficiency Standards (Standards). In these cases, the applicant shall provide a deposit of \$1,000.00 (one thousand dollars) to cover the Energy Commission's evaluation costs, as required by Section 10-109(b)2C.

Within 75 days of receipt of an application, the Commission will provide the applicant with an estimate of the total maximum cost to review and analyze the application. After the Energy Commission completes its review, if the costs exceed the initial deposit, the Energy Commission shall assess an additional fee to cover the total costs up to the estimated amount provided to the applicant. If the cost of reviewing the application is less than the initial deposit, the Energy Commission shall refund the difference to the applicant.

Following submittal of the application package, the Energy Commission may request additional information pursuant to Title 24, Part 1, Section 10-110. Failure to provide such information in a timely manner may be considered cause for rejection or disapproval of the application. Resubmittal of a rejected or disapproved application is considered a new application, and may include a new application fee.

1.2 Approval of Received Applications

1.2.1 Approval Process

For approval of an application, the following procedures apply:

- The compliance software vendor submits an application to the Energy Commission containing all of the materials required by Section 1.1. For software that has not previously been approved, or approval following a change to the Standards, the applicant will also provide the deposit required by Section 1.1.5.
- The Energy Commission shall respond to the application within 45 days, letting the applicant know whether their application is complete and able to be approved. The Energy Commission shall either approve the software, request additional information, or require that the compliance software vendor make specific changes to either the user manual or the compliance software.
- Applications shall be approved either by the Energy Commission at a business meeting or by the Executive Director, as appropriate for the application.

The Energy Commission will provide a written approval upon completion of evaluation and approval of the compliance software application. Once approved, the vendor may issue new copies of the compliance software with the user manual and notify compliance software users and building officials.

1.2.2 When Approval Is Not Required

Changes to the compliance manager that affect functionality (see Section 2.4) do not require vendors of compliance software to follow the process set forth in Section 1.2.1. Changes to compliance software that do not affect compliance with the Standards do not require approval. However, the compliance software vendor must notify and provide the Energy Commission with an updated copy of the program, a list of changes, and an updated copy of the user manual in order for versions of the software that include such changes to remain eligible for demonstrating compliance with the Standards.

Any questions regarding applicable approval procedures should be directed to the Energy Commission.

1.3 Compliance Manager Version Updates

The Energy Commission periodically makes changes to the Compliance Manager to correct functional and analytical errors, incorporate software modules to address compliance options approved by the Energy Commission, add building systems, assemblies, and construction materials, or to make changes necessary to accurately estimate the energy use of buildings covered by Title 24, Part 6, and demonstrate compliance with the Building Energy Efficiency Standards.

Changes to the Compliance Manager may be a major change, a minor change, or a functionality correction, as described below.

Approved compliance software is expected to incorporate the most current version of the Compliance Manager. Depending on the nature of the update to the Compliance Manager, compliance software vendors will have different deadlines for incorporating the most current version of the Compliance Manager into their software, and different allowances for the use of approved software incorporating the previous version of the Compliance Manager.

1.3.1 Major Changes to the Compliance Manager

A major change to the Compliance Manager is any change that is determined by the Energy Commission to be a significant change in software input or output, meaning a change that would affect either a significant number of users of the software or a significant fraction of modeled buildings.

Major changes will be shown, in part, by incrementing the version number of the compliance manager software. When a new version of the Compliance Manager is released that includes a major change, the Energy Commission shall determine a schedule of 90 days or longer, based on the extent of the change, for vendors of approved compliance software to incorporate the new version of the Compliance Manager. When the Energy Commission approves the updated compliance software that incorporates the new version of the Compliance Manager, approval of previous versions expires 90 days after approval of the new version of the compliance software. Versions with expired approval may not be used to show standards compliance for new permit applications.

1.3.2 Minor Changes to the Compliance Manager

A minor change to the Compliance Manager is any change that is not determined to be a major change.

Minor changes will be shown, in part, by appending a letter or sub-number to the compliance software version number. When a new version of the compliance manager is released that includes a minor change and does not include a major change, the Energy Commission shall determine a schedule of 45 days or longer, based on the extent of the change, for vendors of approved compliance software to incorporate the new version of the Compliance Manager.

When the Energy Commission approves the updated compliance software that incorporates the new version of the Compliance Manager, approval of previous versions expires 60 days after approval of the new version of the compliance software. Versions with expired approval may not be used to show standards compliance for new permit applications.

1.4 Changes that Do Not Require Approval

The following changes do not require approval by the Energy Commission, However, the compliance software vendor must notify and provide the Energy Commission with an updated copy of the program, a list of changes, and an updated copy of the user manual in order for versions of the software that include such changes to remain eligible for demonstrating compliance with the Standards.

1.4.1 Functionality Corrections to the Compliance Manager

A change to the compliance manager that solely affects functionality, including but not limited to editing the content of error messages, modifying the appearance of screens, correcting an error that causes an incorrect or unexpected result (i.e., a bug fix), or accommodating a new operating system, shall be indicated by the Energy Commission appending a version letter or sub-number to the version number.

When a new version of the compliance manager is released that includes solely functionality corrections, compliance vendors may update their compliance software to incorporate the updated compliance manager at their discretion. Vendors that do so may request an extension of their approval to cover this updated version. This type of change must be indicated by appending a version letter or sub-number to the version number of the compliance software in order for the Energy Commission to reference the updated version in the written approval.

When approval is extended to a newer version in this manner, approval of the previous version or versions will not expire.

1.4.2 Changes Made by Compliance Software Vendors

Vendors may, when they update their compliance software in a manner that results in no change in compliance results but addresses other aspects of their software's performance, request that approval of their software be extended to apply to this newer version.

Vendors requesting extension of approval shall provide a signed, dated statement certifying under penalty of perjury under the laws of the State of California that the changes have no effect on the determination of compliance with the Standards. This type of change must be indicated by appending a version letter or sub-number to the version number of the compliance software in order for the Energy Commission to reference the updated version in the written approval.

When approval is extended to a newer version in this manner, approval of the previous version or versions will not expire.

1.5 Expired Approval and Decertification

Decertification is a formal process to withdraw approval of compliance software and is distinct from expiring approval of a particular obsoleted version of approved compliance software.

1.5.1 Expiring Approval

Approval of a prior version of software expires, and is replaced by approval of a newer version, as part of the typical cycle of updating compliance software to account for bug fixes and changes to the compliance manager. When new versions of compliance software are approved by the Energy Commission, the approval of previous versions for use with new permit applications shall expire after 90 days, except upon request for a longer period by the software vendor.

A vendor asking for a longer period before expiration shall provide a letter stating the exceptional circumstances that require a longer period in order to prevent harm to the users of the software or the public at large. The Executive Director shall review the letter and determine whether to allow a longer period for the software in question.

During the first 30 days following approval of a new version of compliance software, the Energy Commission shall update the approved compliance programs website, and the Executive Director shall send a notice to building officials and interested parties announcing the expiring approval of the prior version and the current approval of the newer version.

1.5.2 Decertification

Decertification is a formal process for withdrawing approval of compliance software, distinct from expiring approval of an obsolete version of otherwise approved software. Decertification may occur as a result of the following:

- All compliance software products are automatically decertified when the Standards undergo substantial changes such that the software would fail to confirm compliance with the Standards.
- Any compliance software product can be decertified without a proceeding by a letter from the compliance software vendor requesting that a particular version (or versions) of their product be decertified. The decertification request shall briefly describe the nature of the program errors that justify the need for decertification or the reason why decertification is appropriate.
- Any "initiating party" may commence a procedure to decertify a compliance software product according to the steps outlined below. This process provides a means whereby serious program errors, flawed numeric results, improper forms, or incorrect program documentation not discovered in the certification process can be verified, and use of the particular compliance software version discontinued.

1.5.3 Initiating a Decertification Proceeding

The following is the process for challenging compliance software or initiating a decertification procedure:

1. Any party may initiate a review of compliance software approval by sending a written communication to the Energy Commission's Executive Director, with copies to the Building Standards Office. Alternatively, the Energy Commission may be the initiating party for this review. The initiating party shall:
 - (a) State the name of the compliance software and the program version number(s) that contain the alleged errors;
 - (b) Identify concisely the nature of the alleged errors in the compliance software that require review;
 - (c) Explain why the alleged errors are serious enough in their effect on analyzing buildings for compliance to justify decertification; and
 - (d) Include appropriate data or other information relevant to evaluate the alleged errors.
2. The Executive Director shall notify and make a copy of the initial written communication available to the compliance software vendor and any known interested parties within 30 days of receipt. Interested parties shall have 45 days from the date of the notification provided by the Executive Director to submit comments to the Energy Commission relating to the request.
3. Within 75 days of receipt of the written communication, the Executive Director may request any additional information needed to evaluate the alleged compliance software errors from the party who initiated the decertification review process. The party initiating the process must respond within 30 days of the request for additional information.
4. Within 75 days of receipt of the initial written communication, the Executive Director may convene a workshop to gather additional information from the initiating party, the compliance software vendor and interested parties. All parties will have 15 days after a workshop to submit additional information regarding the alleged program errors.
5. Within 90 days after the Executive Director receives the application or within 30 days after receipt of complete additional information requested of the initiating party, whichever is later, the Executive Director shall either:

- (a) Determine that the compliance software need not be decertified; or
 - (b) Submit to the Commission a written recommendation that the software be decertified.
6. If the Energy Commission approves the compliance software decertification, it shall take effect 60 days later. Within the first 30 days of the 60-day period, the Executive Director shall send out a Notice to Building Officials and Interested Parties announcing the decertification.

All initiating parties have the burden of proof to establish that the review of alleged compliance software errors should be performed. The decertification process may be terminated at any time by mutual written consent of the initiating party and the Executive Director.

The compliance software vendor may use the period outlined here to update the compliance software, obtain approval by the Commission, and release a revised version that corrects the errors initially brought to the attention of the Commission.

1.6 Compliance Software Tests

Compliance software vendors applying for approval of their software shall perform a series of computer runs. Each of these runs shall be a systematic variation of the applicant base case model as described in the tests in Appendix A or B. The results from the vendor's software shall be compared to the reference results to verify that the vendor's software meets the requirements for approval as compliance software.

1.6.1 Alternate Compliance Software Tests

The compliance software vendor may propose alternate tests from those specified in Appendix A and Appendix B when the vendor believes that one or more of the standard tests are not appropriate for their compliance software. Alternate tests will be evaluated by the Commission on a case-by-case basis and will be applied to that vendor's software if they are considered reasonable.

1.7 Approval of New Exceptional Methods

The Commission may approve new exceptional methods. Exceptional methods may include special modeling capabilities or calculation methods necessary to recognize building features that cannot be adequately modeled with existing compliance software. See California Code of Regulations, Part 1, Chapter 10, Sections 10-109 and 10-110. When an exceptional method is approved, a new optional capabilities test may be approved as part of the process. To be approved for the new optional capability, vendors must amend their compliance software and update their user manual.

Even if the compliance software incorporates the exceptional method prior to the exceptional method's approval by the Energy Commission, the vendor must receive approval to use the exceptional method in the compliance process as though inclusion of the exceptional method was a minor change to their software.

2 Compliance Manager Capabilities

The Compliance Manager is the simulation and compliance rule implementation software developed by the Energy Commission. The Compliance Manager software simulates the energy use of a proposed residential or nonresidential building and compares it to a standard design energy budget to determine if the building complies with the Standards.

Residential and nonresidential compliance software that is used to demonstrate compliance with the Standards must incorporate this simulation and compliance rule implementation software.

2.1 Standard Design

The standard design building is a building simulated to establish the baseline energy budget for space heating, space cooling, indoor air quality ventilation, and water heating for a proposed building.

For newly constructed buildings, the standard design building shall be modeled as existing in the same location and having the same characteristics, including but not limited to floor area, volume, and configuration, as the proposed building, except that wall and fenestration areas shall be distributed equally between the four main compass points, North, East, South and West. For additions and alterations, the standard design shall be modeled as existing in the same location and having the same characteristics, and shall have the same wall and fenestration areas and orientations as the existing building.

Where the Energy Commission specifies that the standard design building includes a covered product subject to 42 USC 6295, or an appliance regulated by the Appliance Efficiency Regulations, the standard design building shall be modeled to meet but not exceed the efficiency level required by 42 USC 6295 for that covered product or applicable standards required by the Appliance Efficiency Regulations for that regulated appliance, respectively.

The standard design building shall be modeled to include the mandatory requirements of the 2016 Standards, and the prescriptive options that would apply to or most closely match the building features specified for the proposed building.

The process of generating the standard design shall be performed automatically by the compliance manager software. The compliance manager shall perform this modeling based on the inputs that describe the proposed building, substituting the assumptions for wall and fenestration area distribution, required efficiency for the covered product subject to 42 USC 6295 that the Energy Commission specifies in the standard design, and the applicable standards for the appliance regulated by the Appliance Efficiency Regulation that the Energy Commission specifies in the standard design, and mandatory and prescriptive options

applicable to the proposed building, thereby creating a standard design building against which the energy use of the proposed building can be evaluated.

2.2 Time Dependent Valuation

The compliance manager shall convert all electricity, gas or propane used within the modeled buildings to time dependent valuation energy (TDV energy). TDV energy is defined in Joint Appendix 1 and further specified in Joint Appendix 3.

The compliance manager shall calculate the modeled energy budgets of the standard design building and the energy consumption of the proposed building in terms of TDV energy, thereby ensuring that all modeled building features are specified on a one-for-one equivalent energy use or equivalent energy cost basis. Compliance credit for covered products subject to 42 USC 6295 having efficiencies exceeding the efficiency levels required by 42 USC 6295 shall be calculated in terms of TDV energy, thereby ensuring that the compliance credit is on a one-for-one equivalent energy or equivalent cost basis.

2.3 Climate Zone

Compliance requirements, weather, design temperatures, and the Time Dependent Valuation of energy are partly a function of climate. The Commission has established typical weather data, prescriptive packages and energy budgets for 16 geographic areas of California, called climate zones, as specified in the 2016 Standards and Joint Appendix 2.

The compliance manager software shall incorporate modeling of climate zone dependent information based on the climate zone or zip code specified for the proposed building.

Where the compliance manager incorporates climate elements into the modeling calculations for the standard and proposed buildings, the compliance manager shall calculate the effects of weather, temperature, and other climate elements based on the climate zone specified for the proposed building, and shall apply the same adjustments to both buildings.

The standard design shall be modeled as incorporating prescriptive options appropriate to the climate zone specified for the proposed building.

For covered products subject to 42 USC 6295, and for appliances regulated by the Appliance Efficiency Regulations, the estimated energy use of those covered products or appliances used to calculate the total energy use of the standard design and proposed buildings shall be determined using the test procedure prescribed by 42 USC 6293 or the Appliance Efficiency Regulations, respectively. This estimated energy use shall be adjusted to reflect the conditions where Part 6 is being applied, as a part of calculating the total TDV energy of each building, consistent with the Alternative Calculation Approval Manual and as documented in the Alternative Calculation Approval Method Reference Manual.

2.4 Reference Manual

The Energy Commission shall publish a Reference Manual for the Compliance Manager software that specifies the standard design and documents the calculations and methods used by the Compliance Manager software to model building performance, calculate TDV energy, and determine compliance with the 2016 Standards.

3 User Manual

Each approved compliance software vendor shall publish a user manual, which shall contain sufficient information for users to understand how to correctly prepare complete and operable files, and how to generate standard compliance documentation. The user manual shall describe the specific procedures for using the compliance software to comply with the Building Energy Efficiency Standards. This includes instructions for preparing the building input and using the correct fixed and restricted inputs. A copy of the user manual must be submitted with the vendor's application for approval of their software.

User manuals must be written in a clear and concise manner and with an organization and format that allows users to quickly locate the topic and understand the instructions. Vendors of approved compliance software are also required to make copies of their user manual available to all building departments in California.

The following sections describe the information that must be included in user manuals.

3.1 Software Capabilities

The user manual shall include a section that discusses the program capabilities. Reference may be made to other sections of the user manual for more complete descriptions, if appropriate.

3.2 Preparing Basic Input

The user manual shall cover the basic use of the compliance software for compliance. This section shall include a complete summary of all inputs and commands necessary for compliance.

3.3 Checklist for Compliance Submittal

The user manual shall contain a checklist of all items that must be included in a compliance submittal to a building official using the compliance software.

3.4 Sample Compliance Documentation

The user manual shall include a complete set of compliance documentation for a sample building. The building need not be overly complex, nor include every software capability. The example shall include all documentation and standard reports that would normally be

submitted to a building official. This example shall be usable as a model for compliance software users and building officials of a proper compliance submittal.

3.5 Compliance Statement

The following statement shall appear within the first three (3) pages of the user manual:

[Compliance software name] may be used to show compliance with California's 2016 Building Energy Efficiency Standards.

3.6 Related Publications

The user manual shall refer users to the following related Energy Commission publications and where to obtain them:

- *2016 Building Energy Efficiency Standards* (publication number unknown at time of printing)
- *2016 Residential Compliance Manual* (publication number unknown at time of printing)
- *2016 Nonresidential Compliance Manual* (publication number unknown at time of printing)

APPENDIX A. RESIDENTIAL CERTIFICATION TESTS

The purpose of ACM testing is to demonstrate that candidate software submitted for approval successfully integrates Compliance Manager into the candidate software. This includes testing a variety of both inputs and reporting to ensure that buildings are being accurately modeled under the rules established by the Energy Commission.

A test data set with specific description and details of the tests, inputs, and a spreadsheet of compliance results is available from the Energy Commission to assist vendors in preparing the certification tests. The tests are based on the Energy Commission 2100 ft², 2700 ft² and 6960 ft² new construction prototypes and the 1665 ft² addition/alteration prototype described in Section F.

A. Test Data Set (TDS) Descriptions

The TDS runs are based on the prototypes described in Section F below. The exact details of the TDS runs are provided in the form of reference software input files, currently an .ribd format.

Tests T01, T02, and T03 show that the compliance software matches the standard design in all climate zones for the three prototype buildings. The glass and walls are equally distributed, with no overhangs modeled. The prototype buildings (as shown in Table A-1) for these tests are named S2100, S2700 and S6960. The "S" indicates that the building is in the standard configuration.

Tests T04, T05, and T06 run the prototype buildings using actual building features such as unequal glass and wall distribution, overhangs and other non-prescriptive requirements. The standard design for these tests will be equal to the standard design in Tests T01-T03. The prototype buildings for these tests are named P2100, P2700, and P6960. The "P" indicates that the building is in the proposed configuration.

Tests T07, T08, T09, and T11 are based on a single prototype in a single climate zone - T01R12. Test T07 models common compliance measures and test T08 runs water heating variations. T09 test multiple orientations. T11 tests source energy calculations.

Test T10 covers multifamily central water heating starting with on T03R12 inputs.

Tests T12 and T13 cover existing plus addition plus alteration calculations using P1665 prototype for climate zone 12.

Additional tests will be added as needed to reasonably test candidate software against the reference as features are added or changed. There will also be non-numeric tests added to verify that the candidate software can complete the compliance process by generating reports.

Table A-1 contains a list of the tests.

Table A-1: Test Data Set Files and Descriptions

Test #	Run #	# of Runs	Description	Prototype
			Standard and Proposed Design Tests	
T01	R01-R16	16	Standard Design Test	S2100
T02	R01-R16	16	Standard Design Test	S2700
T03	R01-R16	16	Standard Design Test	S6960
T04	R01-R16	16	Proposed Design Test	S2100
T05	R01-R16	16	Proposed Design Test	S2700
T06	R01-R16	16	Proposed Design Test	S6960
T07			Common Measures in Climate Zone 12¹	
T07	R01	1	Package A	T04R12
T07	R02	1	Fenestration U 0.40/S 0.40	T04R12
T07	R03	1	Wall R13	T04R12
T07	R04	1	Ceiling R49	T04R12
T07	R05	1	Furnace AFUE 92	T04R12
T07	R06	1	Air Conditioner SEER 16/EER 14	T04R12
T07	R07	1	No Cool Vent	T04R12
T07	R08	1	Ducts 2% Leakage	T04R12
T07	R09	1	Insulation Construction Quality Improved	T04R12
T07	R10	1	Air Leakage CAH50 2.0	T04R12
T08			Water Heating in Climate Zone 12²	
T08	R01	1	Package A	T04R12
T08	R02	1	Parallel Piping	T04R12
T08	R03	1	Small Tankless EF 0.80/Input 195000/0 gal	T04R12
T08	R04	1	Large Tankless RE 0.76/Input 300000/0 gal	T04R12
T08	R05	1	Large Storage RE 0.77/Input 100000/75 gal/Stby 0.01	T04R12
T08	R06	1	Large Storage RE 0.77/Input 100000/75 gal/Stby 0.03	T04R12
T08	R07	1	Electric Resistance EF 0.92/Input 4500	T04R12
T08	R08	1	Heat Pump EF 2.4/Input 4500	T04R12
T08	R09	1	2 Water Heaters using multiplier	T04R12
T08	R10	1	2 Water Heaters using 2 entries	T04R12
<p>1. Tests have the same standard design as T01R12.</p> <p>2. Some tests will have a standard design different than T01R12.</p>				

Test #	Run #	# of Runs	Description	Prototype
T09			Multiple Orientation, Climate Zone 12	
T09	R01	1	Single Standard Front 45	T04R12
T09	R02	1	East Standard	T04R12
T09	R03	1	South Standard	T04R12
T09	R04	1	West Standard	T04R12
T09	R05	1	North Standard	T04R12
T09	R06	1	Single Proposed Front 45	T04R12
T09	R07	1	East Proposed	T04R12
T09	R08	1	South Proposed	T04R12
T09	R09	1	West Proposed	T04R12
T09	R10	1	North Proposed	T04R12
T10			Multi Family Water Heating in Climate Zone 12³	
T10	R01	1	8 Storage	T06R12
T10	R02	1	8 Storage 2 Systems	T06R12
T10	R03	1	8 Large Storage	T06R12
T10	R04	1	2 Large Storage Central Solar	T06R12
T10	R05	1	2 Large Storage Central Solar Recirc	T06R12
T10	R06	1	2 Large Storage Central Recirc	T06R12
T10	R07	1	2 Small Instant Central Solar	T06R12
T10	R08	1	2 Small Instant Central Solar Recirc	T06R12
T10	R09	1	1 Indirect Central Solar	T06R12
T10	R10	1	1 Indirect Central Solar Recirc	T06R12
T11			Source Energy in Climate Zone 12⁴	
T11	R01	1	Package A	T04R12
T11	R02	1	Package A no Natural Gas	T04R12
T11	R03	1	Electric DHW	T04R12
T11	R04	1	Electric DHW no Natural Gas	T04R12
T11	R05	1	Heatpump DHW	T04R12
T11	R06	1	Heatpump DHW no Natural Gas	T04R12
T11	R07	1	Heatpump HVAC	T04R12
T11	R08	1	Heatpump HVAC no Natural Gas	T04R12

3. Some tests will have a standard design different than T03R12.

4. Some tests will have a standard design different than T01R12

Test #	Run #	# of Runs	Description	Prototype
T11	R09	1	Heatpump HVAC & DHW	T04R12
T11	R10	1	Heatpump HVAC & DHW no Natural Gas	T04R12
T12			E+A+A Base & Windows⁵	
T10	R01	1	E 1440 ft2 as New Construction	P1665
T10	R02	1	E 1440 ft2 as Addition/Alteration	P1665
T10	R03	1	EA 1665 ft2	P1665
T10	R04	1	EAA Ceiling R38 Verified	P1665
T10	R05	1	EAA Ceiling R38 Verified Wind U 0.41/S 0.36	P1665
T10	R06	1	EAA Ceiling R38 Verified Wind U 0.41/S 0.36 Verified	P1665
T10	R07	1	EAA Ceiling R38 Verified Wind U 0.40/S 0.35	P1665
T10	R08	1	EAA Ceiling R38 Verified Wind U 0.40/S 0.35 Verified	P1665
T10	R09	1	EAA Ceiling R38 Verified Wind U 0.39/S 0.34	P1665
T10	R10	1	EAA Ceiling R38 Verified Wind U 0.39/S 0.34 Verified	P1665
T13			E+A+A Walls & HVAC⁵	
T10	R01	1	EAA Ceiling R38 Verified Wall R11	P1665
T10	R02	1	EAA Ceiling R38 Verified Wall R11 Verified	P1665
T10	R03	1	EAA Ceiling R38 Verified Wall R13	P1665
T10	R04	1	EAA Ceiling R38 Verified Wall R13 Verified	P1665
T10	R05	1	EAA Ceiling R38 Verified HVAC Worse	P1665
T10	R06	1	EAA Ceiling R38 Verified HVAC Worse Verified	P1665
T10	R07	1	EAA Ceiling R38 Verified HVAC Equal	P1665
T10	R08	1	EAA Ceiling R38 Verified HVAC Equal Verified	P1665
T10	R09	1	EAA Ceiling R38 Verified Better	P1665
T10	R10	1	EAA Ceiling R38 Verified Better Verified	P1665

5. Standard design varies with features and verification.

B. Test Data Set

The test data set is maintained by the Energy Commission and made available to vendors. This data consists of:

1. The reference program input files (currently .ribd files) for all runs that describe all inputs for each run.
2. The test data set spreadsheet that describes each test and compares the current reference results to the candidate results to determine if it passes the numeric results test. The results for the reference software will be imported using the AnalysisResults.csv file generated by CBECC-Res reference software. Results for the candidate software may be imported or manually entered.

3. Additional intermediate results and reports for a small subset of runs that is used to demonstrate that the candidate software is capable of completing the entire compliance process of input, run, and reporting. These results will be verified either by visual review or with the use of a file comparison utility program.

C. Software Vendor Requirements

Candidate software needs to:

1. Secure the latest copy of the test data set from the Energy Commission.
2. Create input files in the candidate software's user interface to match those in the test data set.
3. Run the test data set and load the results into the spreadsheet to verify that the results match.
4. Compare the intermediate results and reports to verify that the results match, as described in the test data set spreadsheet

D. Submittals for Approval

Submittals to the Energy Commission requesting approval shall include:

1. Access to the candidate software in a manner that allows the Energy Commission to use the software.
2. All files necessary to compare results to the test data set, including the input files, the results spreadsheet and the specified intermediate results and reports.
3. Any other documentation required in the ACM Approval Manual or the ACM Reference Manual.

The Energy Commission will review the test data set results to verify that the software works and that the documentation meets ACM requirements.

E. Compliance Manager Updates

When new versions of Compliance Manager or its components become available, the Energy Commission will run the test data set to verify that the results match. If the results do not match, but it is determined that the new results are the correct results, the test data set will be updated to substitute the results of the new version as the test data set.

F. Prototype Buildings**One-Story Prototype**

Figure A-1 through Figure A-3 and Table A-2 define the 2100 ft² prototype.

Note that the glass area and distribution provided on these drawings is only to show a realistic image of the home. Glass area and orientation for impact and cost effectiveness is set using a glass distribution typical of California homes. Glass area, distribution and other details for the ACM tests are specified in the test data set.

Figure A-1: One-Story Prototype Front View

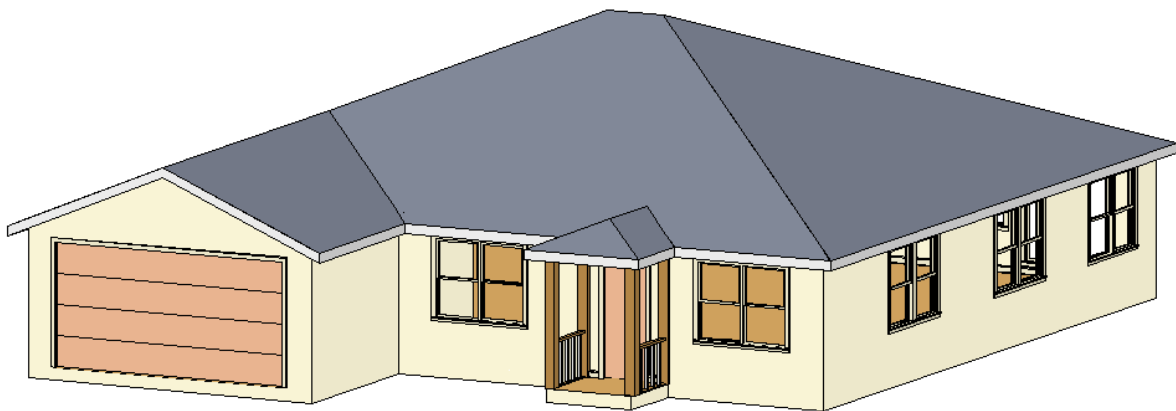


Figure A-2: One-Story Prototype Back View

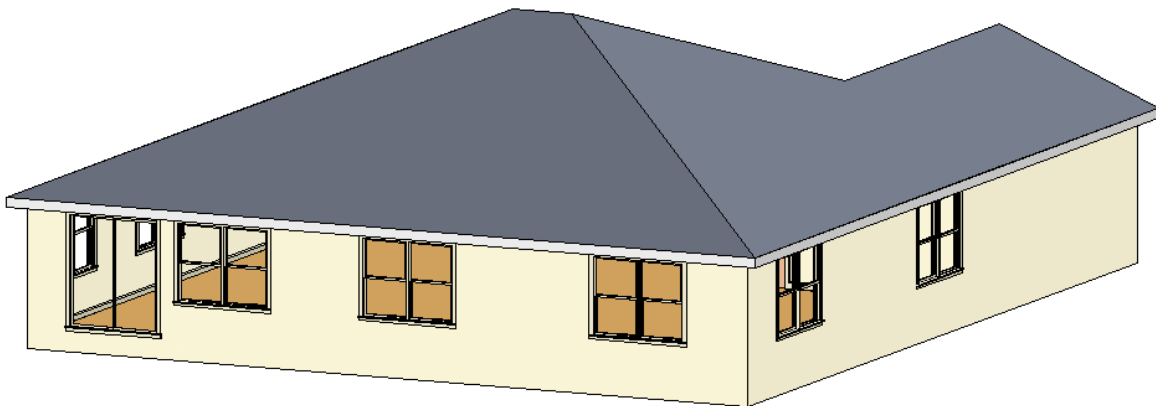


Figure A-3: One-Story Prototype Floor Plan

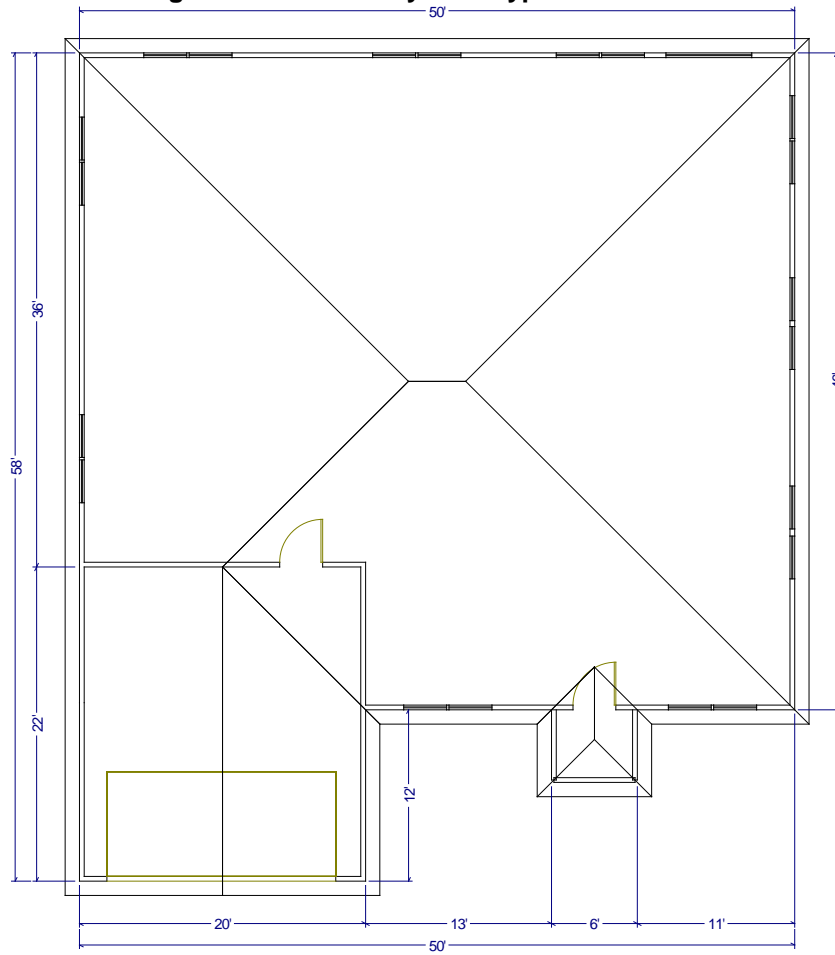


Table A-2: One-Story Prototype Description

Component	Description
Ceiling height	9 ft
Conditioned floor area	2100 ft ²
Gross areas	
Slab	2100 ft ²
Slab perimeter, outside	162 ft
Slab Garage	440 ft ²
Slab perimeter, garage	54 ft from garage to outside
Ceiling	2100 ft ² , vented attic
Front wall	270 ft ²
Front garage wall	180 ft ²
Left wall	324 ft ²
Left garage wall	90 ft ²
Back wall	450 ft ²
Right wall	414 ft ²
Garage front wall	180 ft ² from garage to outside
Garage left wall	198 ft ² from garage to outside
Garage right wall	108 ft ² from garage to outside
Doors	
Front door	20 ft ²
Garage door	20 ft ²
Garage car door	128 ft ²
Overhangs	1 ft (when modeled)

Two-Story Prototype

Figure A-4 through Figure A-7 and Table A-3 define the 2700 ft² prototype.

Note that the glass area and distribution provided on these drawings is only to show a realistic image of the home. Glass area and orientation for impact and cost effectiveness is set using a glass distribution typical of California homes. Glass area, distribution and other details for the ACM tests are specified in the test data set.

Figure A-4: Two-Story Prototype Front View



Figure A-5: Two-Story Prototype Back View

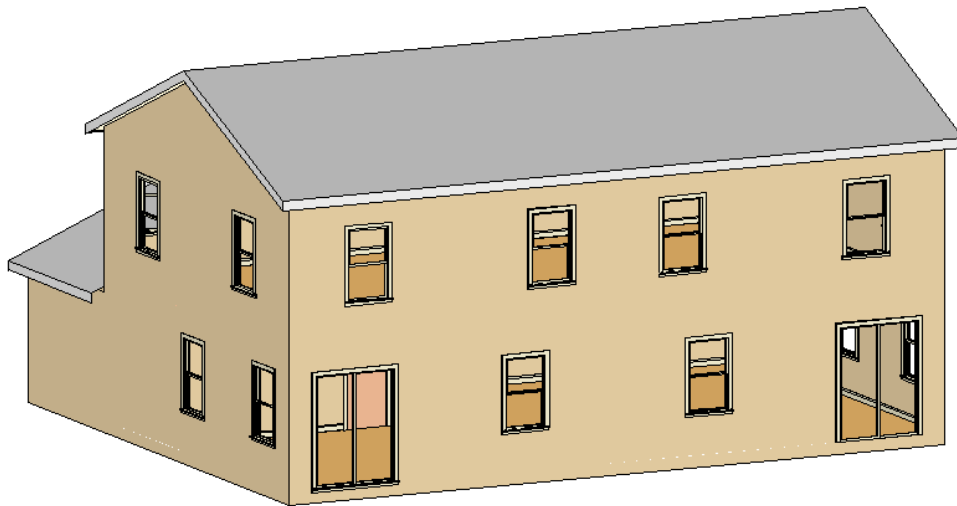


Figure A-6: Two-Story Prototype Floor Plan – 1st Floor

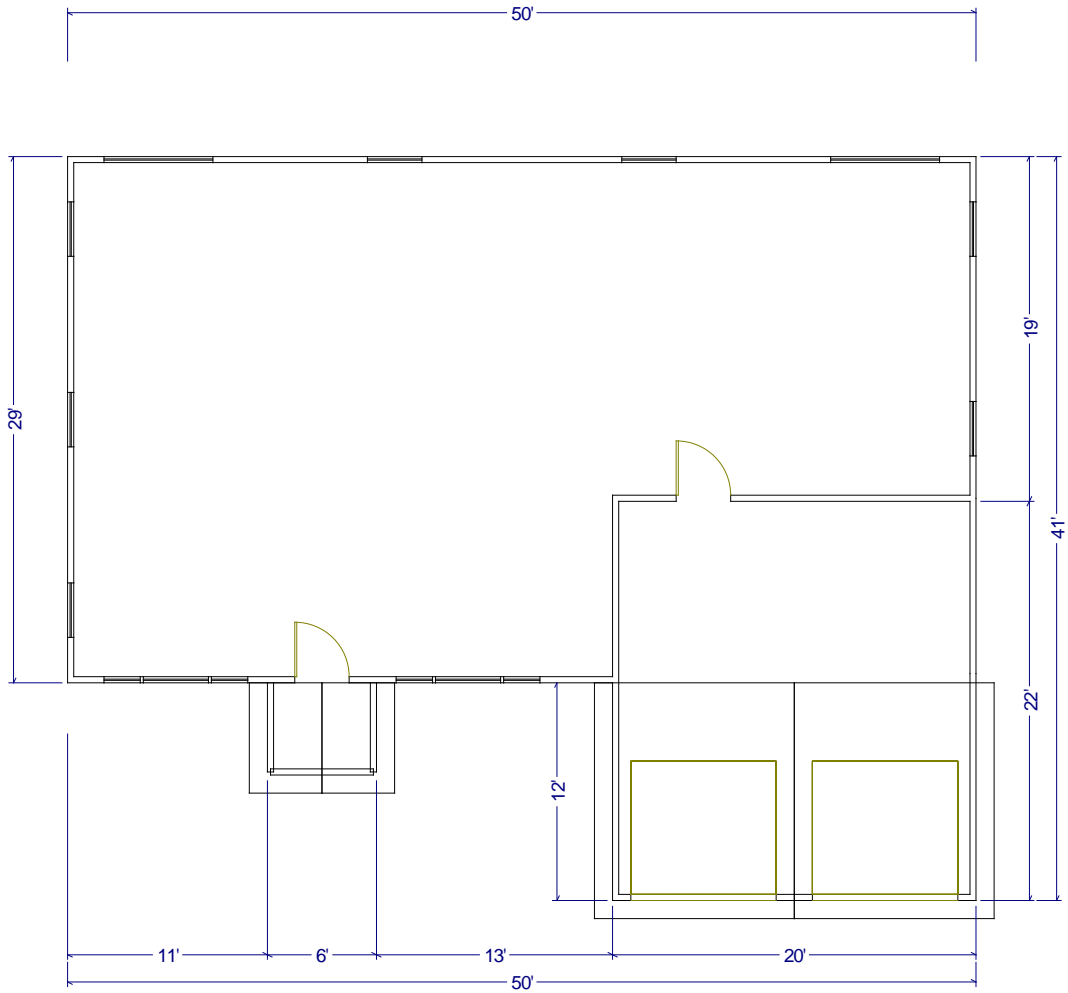


Figure A-7: Two-Story Prototype Floor Plan – 2nd Floor



Table A-3: Two-Story Prototype Description

Component	Description
Ceiling height	9 ft with 1 ft between floors
Conditioned floor area	2700 ft ²
Gross areas	
Slab	1250 ft ²
Slab perimeter, outside	128 ft
Slab, garage	440 ft ²
Slab perimeter, garage	54 ft from garage to outside
Ceiling	1450 ft ² , vented attic
Floor over garage	200 ft ²
Front wall	728 ft ²
Front garage wall	180 ft ²
Front garage kneewall	42 ft ²
Left wall	551 ft ²
Back wall	950 ft ²
Right wall	461 ft ²
Right garage wall	90 ft ²
Garage front wall	180 ft ² from garage to outside
Garage left wall	108 ft ² from garage to outside
Garage right wall	198 ft ² from garage to outside
Doors	
Front door	20 ft ²
Garage door	20 ft ²
Garage car door	128 ft ²
Overhangs	1 ft (when modeled)

Multifamily Prototype

The multifamily prototype is a 6960 ft² eight-unit two-story apartment building consisting of four 780 ft² (26 ft wide by 30 ft deep) one-bedroom apartments and four 960 ft² (32 ft wide by 30 ft deep) two-bedroom apartments. The units share common walls and either common floors or ceilings. Multiples of this layout may be combined to represent other typical multifamily configurations.

Figure A-8 through Figure A-11 and Table A-4 define the 6960 ft² prototype.

Note that the glass area and distribution provided on these drawings is only to show a realistic image of the home. Glass area and orientation for impact and cost effectiveness is set using a glass distribution typical of California construction. Glass area, distribution and other details for the ACM tests are specified in the test data set.

Figure A-8: Multifamily Prototype Front View

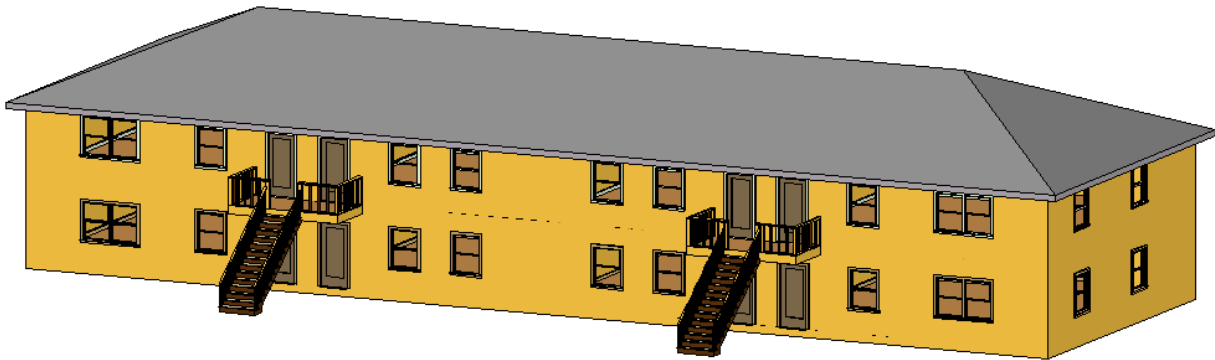


Figure A-9: Multifamily Prototype Back View

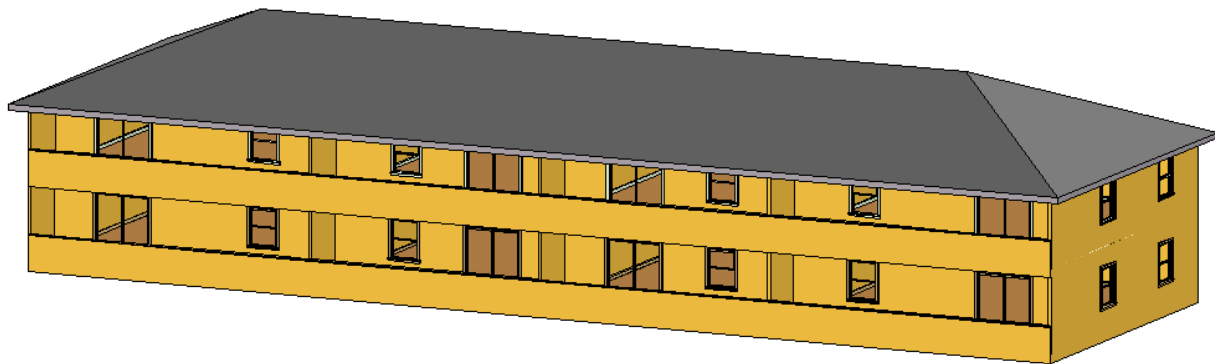


Figure A-10: Multifamily Prototype Floor Plan – 1st Floor

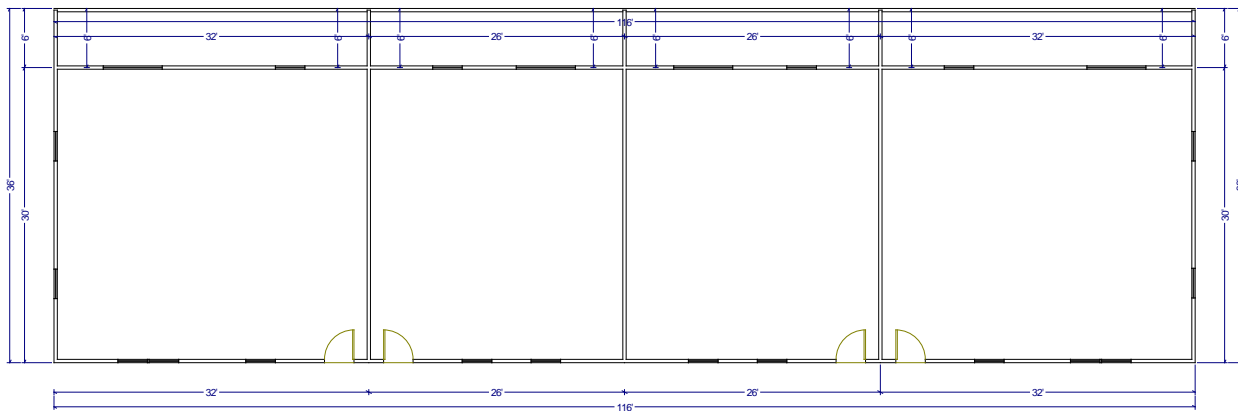


Figure A-11: Multifamily Prototype Floor Plan – 2nd Floor

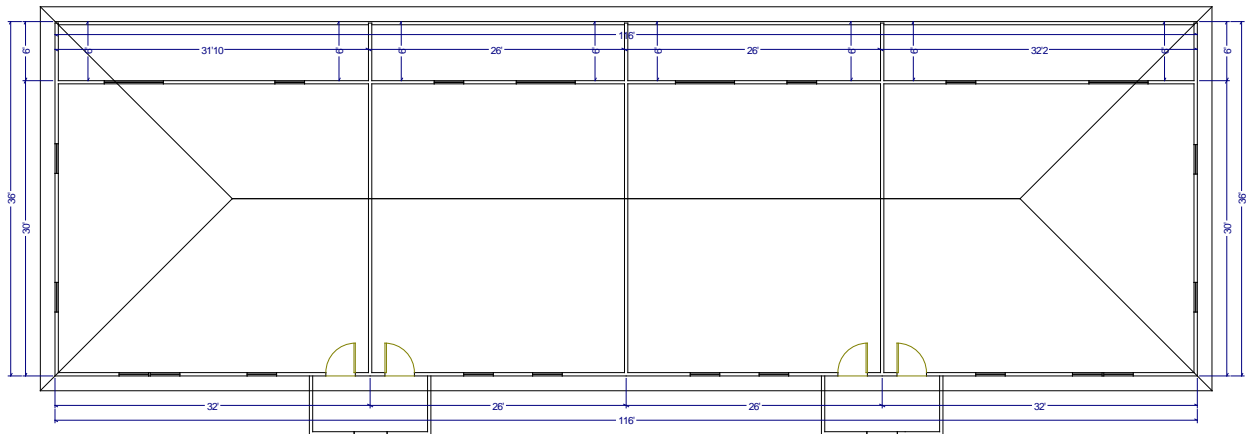


Table A-4: Multifamily Prototype Description

Component	Description
Ceiling height	8 ft with 1 ft between floors
Conditioned floor area	6960 ft ²
Dwelling units	8
Gross areas	
Slab	3480 ft ²
Slab perimeter, outside	292 ft
Ceiling	3480 ft ² , vented attic
Front wall	1972 ft ²
Left wall	510 ft ²
Back wall	1972 ft ²
Right wall	510 ft ²
Doors	
Front door	160 ft ²
Overhangs	1 ft (when modeled)

Addition/Alteration Prototype

Figure A-12 through Figure A-14 define the addition/alteration 1665 ft² prototype without the addition.

Figure A-15 through Figure A-16 and Table A-5 define the addition/alteration with the addition.

Figure A-12: Addition/Alteration Prototype Front View without Addition

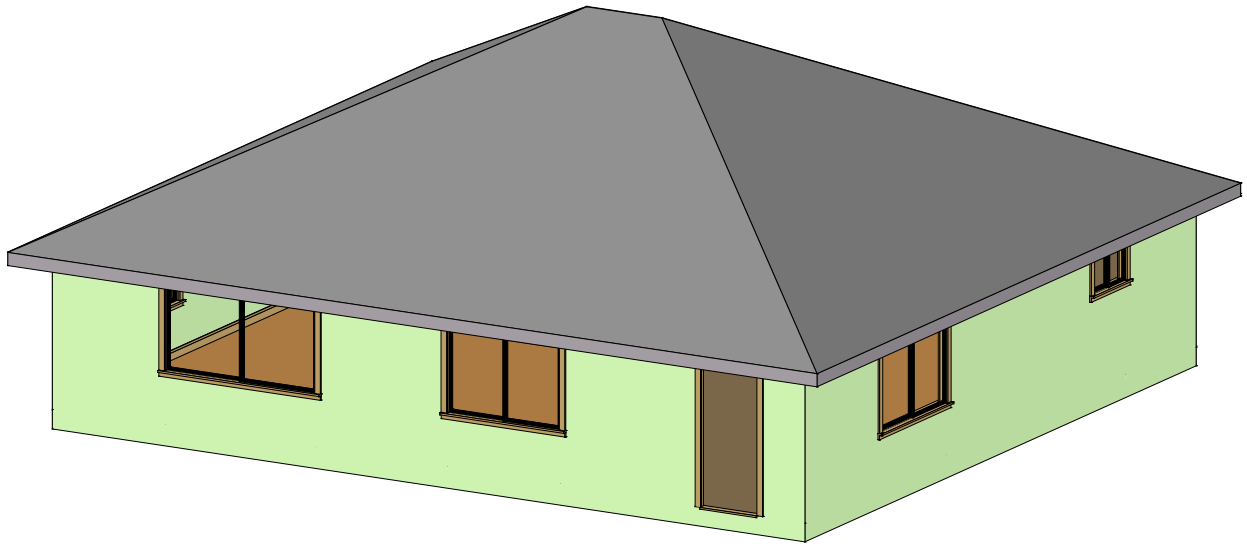


Figure A-13: Addition/Alteration Prototype Back View without Addition

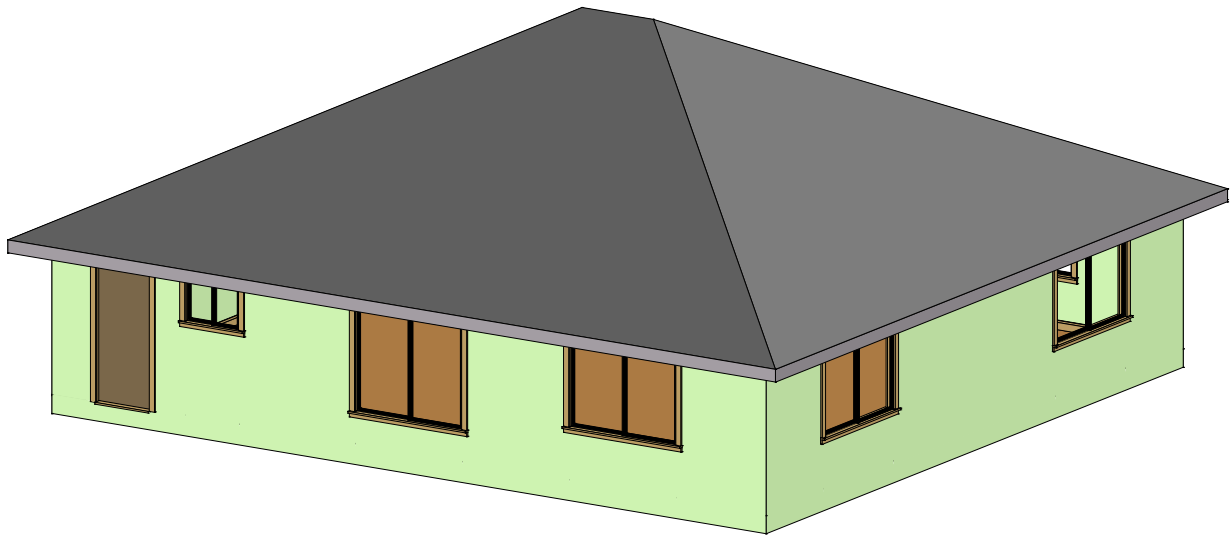


Figure A-14: Addition/Alteration Prototype Floor Plan without Addition

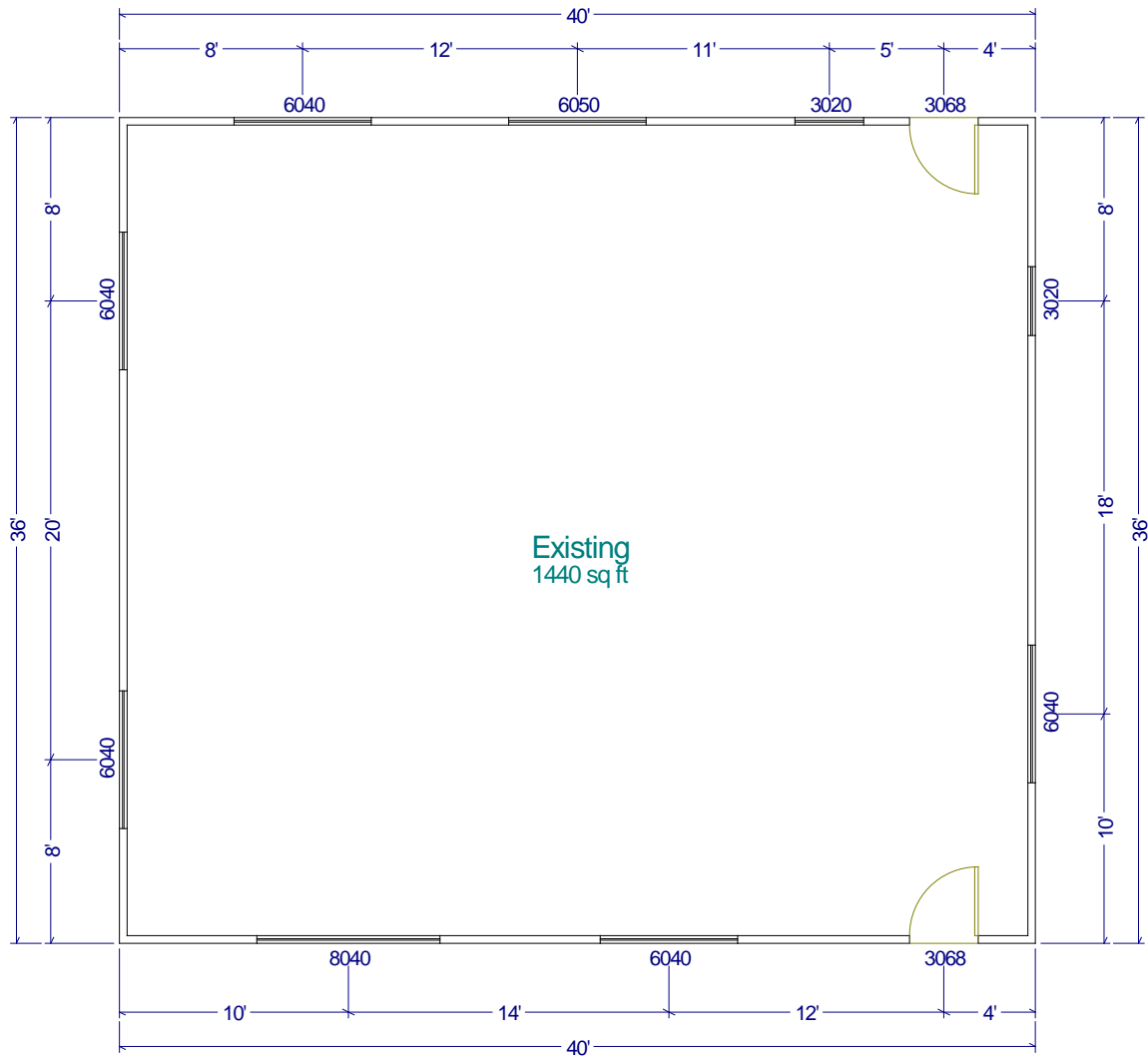


Figure A-15: Addition/Alteration Prototype Back View with Addition

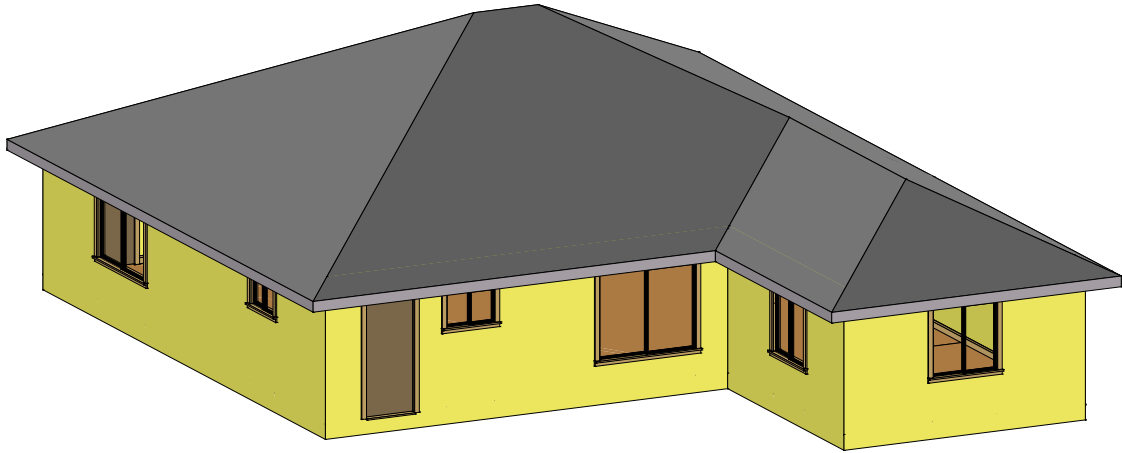


Figure A-16: Addition/Alteration Prototype Floor Plan with Addition

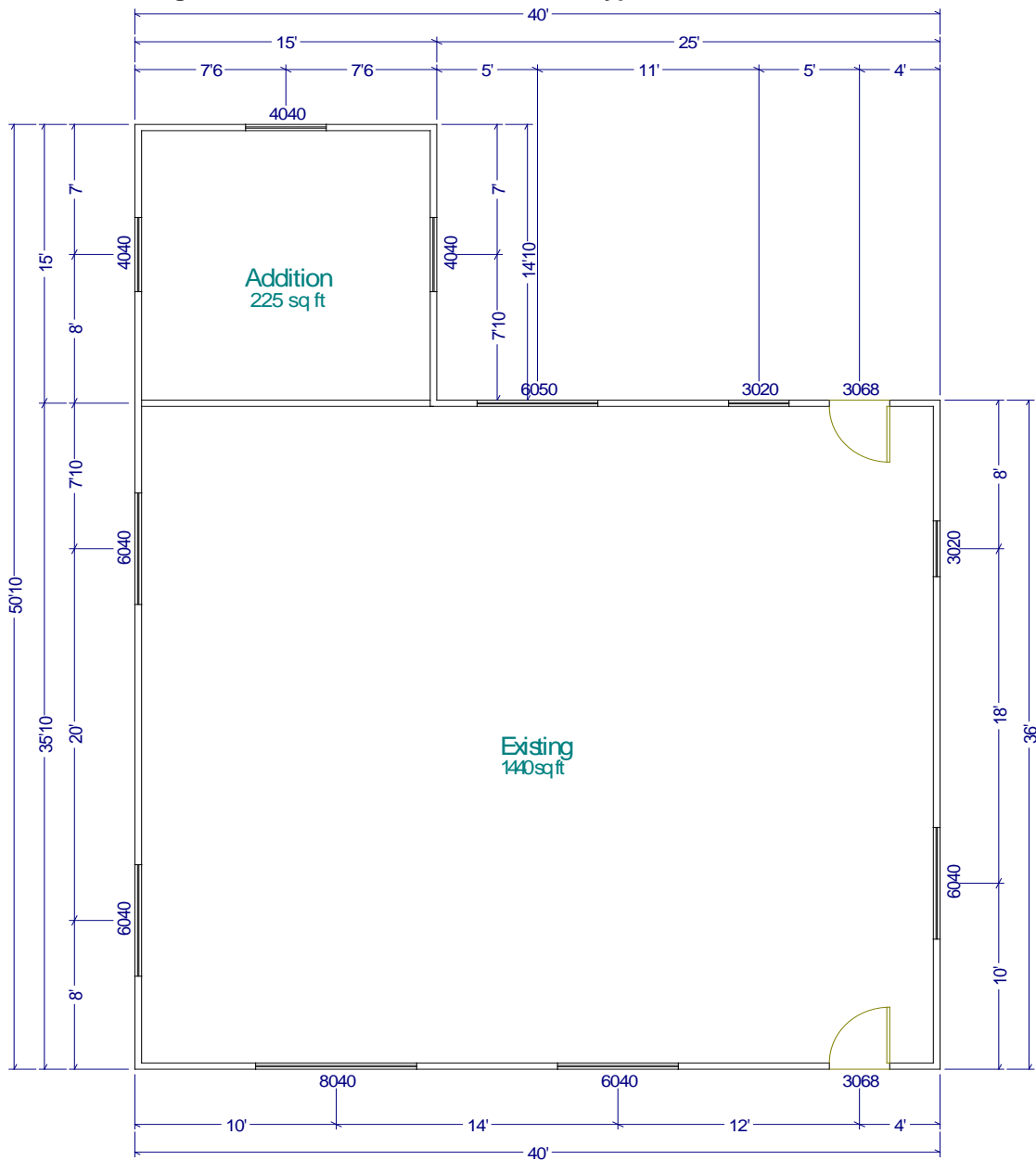


Table A-5: Addition/Alteration Prototype Description

Component	Description
Ceiling height	8 ft
Existing floor area	1440 ft ²
Addition floor area	225 ft ²
Gross areas	
Existing Slab	1440 ft ²
Addition Slab	225 ft ²
Existing Slab perimeter	137 ft
Addition Slab perimeter	45 ft
Existing Ceiling	1440 ft ² , vented attic
Addition Ceiling	225 ft ² , vented attic
Existing Front wall	320 ft ²
Existing Left wall	288 ft ²
Addition Left wall	120 ft ²
Existing Back wall	320 ft ²
Addition Back wall	120 ft ²
Existing Right wall	288 ft ²
Addition Right wall	120 ft ²
Windows	
Existing Front Window 1	24 ft ²
Existing Front Window 2	32 ft ²
Existing Left Window 1	24 ft ²
Existing Left Window 2	24 ft ²
Addition Left Window	16 ft ²
Addition Back Window	16 ft ²
Existing Right Window 1	6 ft ²
Existing Right Window 2	24 ft ²
Addition Right Window	16 ft ²
Doors	
Existing Front door	20 ft ²
Existing Back door	20 ft ²

APPENDIX B. NONRESIDENTIAL CERTIFICATION TESTS

This section contains the procedures used to test and certify vendor's Compliance Software as acceptable for compliance with Title 24, Part 6. Compliance software is expected to conform to the modeling guidelines specified in the Nonresidential ACM Reference Manual. The tests used to verify software functionality and accuracy of simulation results are referred to as the Reference Method. The tests fall into the following categories:

1. Tests to verify that the software is evaluating thermal loads and the response of the HVAC systems to these loads in a manner that is acceptable. These tests reference *ASHRAE Standard 140-2007, Standard Method of Test for Evaluation of Building Energy Analysis Computer Programs*.
2. Tests that verify that compliance software is capable of modeling envelope, lighting, HVAC and water heating efficiency features and provides precise estimates of energy tradeoffs and reasonably accurate predictions of building energy consumption.
3. Tests to verify that the Standard Design (baseline building) is created correctly, e.g., that the baseline HVAC system is properly specified, that other components of the baseline are correctly defined and that rules that fix and restrict inputs (such as schedules and plug loads) are properly applied. These tests do not verify simulation outputs, but may require simulations to be run to specify inputs that are dependent on system sizing.
4. The Reference Method is designed to cover vendor software functionality for building envelope, space uses, lighting, daylighting, HVAC and water heating, both for simulation performance and for proper implementation of ACM rules described in the Nonresidential ACM Reference Manual. The California Energy Commission reserves the right to add Ruleset Implementation Tests or Software Sensitivity Tests to verify existing or future compliance software requirements. Moreover, the California Energy Commission reserves the right to adjust the passing criteria (see Test Criteria, Section 1.7) for the Software Sensitivity Tests to reflect the capabilities of commonly available energy simulation programs.

1.1 ASHRAE Standard 140-2007 Tests

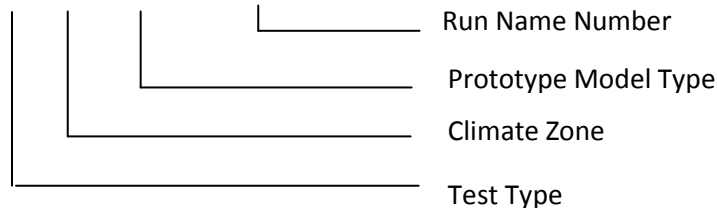
This method of testing is provided for analyzing and diagnosing building energy simulation software using software-to-software and software-to-quasi-analytical-solution comparisons. The methodology allows different building energy simulation programs, representing different degrees of modeling complexity, to be tested by comparing the predictions from other building energy programs to the simulation results provided by the Compliance Software in question.

Vendor software must pass the ASHRAE 140-2007 tests and provide a written statement verifying this in the Self Certification Form.

1.2 Ruleset Implementation Tests

The Ruleset Implementation Tests are labeled using the format:

(S) 0200CZ - OffSml - Run01



The following tests shall be performed to verify that the compliance software correctly creates the Standard Design model and applies modeling rules as per the modeling guidelines provided in the 2016 Nonresidential ACM Reference Manual. The user model shall be created by modifying the appropriate Prototype Model type. The Standard Design Model for each test case shall be generated automatically by the compliance software.

The intent of each test run, characteristics of the user model, and inputs to be verified in the Proposed and Standard Design models are described below.

1. (D/S) 020006-OffSml-Run01– This test will verify that the applicant software models the wall, floor, and roof construction correctly in the Standard Design model and that the envelope and fenestration performance requirements for the Standard Design are correctly modeled.
2. (D/S) 020015-OffSml-Run02– This test will verify that the applicant software models the wall, floor, roof construction, and fenestrations correctly, and that the envelope performance requirements for the Standard Design are correctly modeled.

The user model is a small office building in climate zone 15 with the following envelope characteristics:

3. (D) 070015-HotSml-Run03 – This test will verify that the applicant software models the wall, floor and roof construction correctly in the Standard Design model and that the envelope and fenestration performance requirements for the Standard Design are correctly modeled.

The user model is a small hotel building in climate zone 15 with the following characteristics:

4. (D/S) 030006-OffMed-Run04 – This test will verify that mandatory minimum opaque envelope insulation requirements are applied. The user model is a small office building in climate zone 6, with a metal-framed wall containing R-5 continuous insulation on the exterior and a U-factor of 0.136.
 - a. For this test, the user model should be **undefined**, and the compliance simulation should not run.

5. (D) 040006-OffLrg-Run05 – Run 05 tests whether the applicant software correctly determines the window area of the Standard Design model.

The user model is the Large office building in climate zone 6 with an overall window-to-wall ratio (WWR) of 52% made of a continuous band of glass distributed evenly across all facades.

6. (D) 040006-OffLrg-Run06 – Run 06 tests whether the applicant software correctly determines the window area of the Standard Design model.

The user model is the Large office building in climate zone 6 with overall building WWR 46% and 50% WWR in the west, 40% in South, 45% in East, and 50% in the North façade.

7. (D) 080006-Whse-Run07 – This tests verifies whether the applicant software models the Standard Design skylight correctly, and checks whether the applicant software determines the skylight area of the Standard Design model correctly.
8. (D) 080006-Whse-Run08 – This test checks whether the applicant software determines the skylight area of the Standard Design model correctly.
9. (D) 080006-Whse-Run09 – This test checks whether the applicant software determines the skylight area of the Standard Design model correctly.
10. (D) 030006-OffMed-Run10 – This test verifies whether the applicant software inserts the correct Standard Design inputs for schedules, occupant density, equipment power density, lighting power density, hot water load and ventilation rates using the Complete Building lighting method.
11. (D) 040006-OffLrg-Run11 – This test verifies whether the applicant software inserts the correct Proposed Design and Standard Design inputs for schedules, occupant density, equipment power density, lighting power density, hot water load and ventilation rates. This run also tests the capability of the applicant software to model Standard Design inputs for multiple space types using the Area Category lighting method.
12. (D) 030006-OffMed-Run12 – This test verifies if the applicant software applies the requirements of the Tailored Lighting Method appropriately.
13. (D) 030006-OffMed-Run13 – This test verifies if the applicant software applies the requirements of the Tailored Lighting Method appropriately.
14. (D/S) 020006-OffSml-Run14 – This test verifies if the applicant software correctly models lighting power density and schedules for eligible California Power adjustment factors.
15. (D) 080006-Whse-Run15 – This test verifies the ability of the applicant software to correctly model daylighting controls.
16. (D) 050006-RetlMed-Run16 – This test verifies the ability of the applicant software to correctly model daylighting controls.

17. (D) 040006-OffLrg-Run17 – This test verifies if the rules for exterior lighting are applied accurately for exterior lighting power, exterior lighting control and schedules. This test also verifies if the Service Hot Water systems are modeled correctly.
18. (D/S) 020006-OffSml-Run18 – This test checks if the applicant software correctly models the Standard Design HVAC system.
19. (D) 030006-OffMed-Run19 – This test checks if the applicant software correctly models the Standard Design HVAC system.
20. (D) 040006-OffLrg-Run20 – This test checks if the applicant software correctly models the Standard Design HVAC system.
21. (D) 080006-Whse-Run21 – This test checks if the applicant software correctly models the Standard Design HVAC system.
22. (D) 07006-HotSml-Run22 – This test checks if the applicant software correctly models the Standard Design HVAC system.
23. (D) 030006-OffMed-Run23 – This test checks the Standard Design building for an existing, altered building that has the roof replaced with a metal building roof, R-15 continuous insulation, and that has the windows replaced on the South façade with low-e, double glazed windows with $U=0.40$, $SHGC=0.33$ and $VT=0.50$. The windows on the North, East and West facades are existing, unchanged single-paned windows with $U=0.55$, $SHGC=0.56$, $VT=0.6$.
24. (D) 020006-OffSml-Run24– This test checks the Standard Design building for an existing, altered building.
25. (D) 020006-OffSml-Run25– This test checks the Standard Design building for an existing, altered building.
26. (D) 020006-OffSml-Run26– This test checks the Standard Design building for an existing, altered building.
27. (D) 050006-RetlMed -Run27– This test checks the Standard Design building for an addition, modeled alone.
28. (D) 050006-RetlMed -Run28– This test checks the Standard Design building for an addition, modeled with existing, unaltered building.
29. (D) 030006-OffMed -Run29– This test checks the Standard Design building for an Envelope Only, partial compliance project.
30. (D) 020006-OffMed –Run30– This test checks the Standard Design building for a Lighting and Mechanical partial compliance project

1.2.1 Results Comparison

The applicant shall perform all tests specified in Section IV and report the outputs in their application. Forms for reporting this output are provided in the 2016 Nonresidential ACM Reference Manual. Note that the Standard Design for some inputs, such as cooling efficiency and pump power, are dependent upon the autosizing of the HVAC equipment. The ruleset implementation tests do not check that the autosized capacity matches the Reference Method, but rather, that the Standard Design input is properly defined in relation to the autosized capacity.

1.3 Software Sensitivity Tests

This section details the eligibility requirements for an applicant simulation program to be approved for use as compliance software as specified in the 2016 ACM Approval Manual. A series of quantitative tests called the Software Sensitivity Tests shall be performed to measure the change in energy consumption when changing specified input parameters. Applicant software results will be compared against predetermined Reference results to demonstrate that the applicant software is acceptable for use in code compliance. There are a total of 96 tests. All the test cases described here shall be performed and results summarized in the approval application. Forms for providing this summary are provided in the 2016 Nonresidential ACM Reference Manual.

Each test case in the Software Sensitivity test is labeled uniquely to make it easier to keep track of the runs and to facilitate analysis. The following scheme is used:

XXYYZZ-Prototype-RunDescription

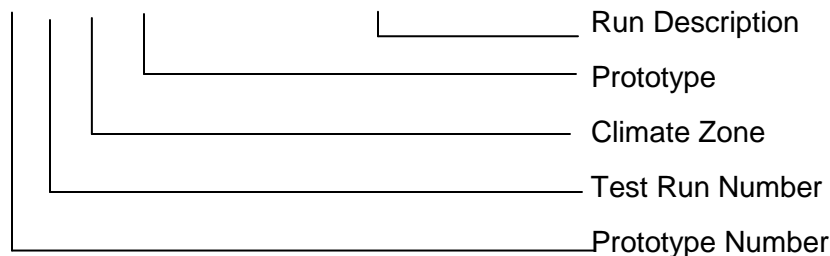
Where, XX denotes the Prototype Number

YY denotes Test Run Number

ZZ denotes Climate zone

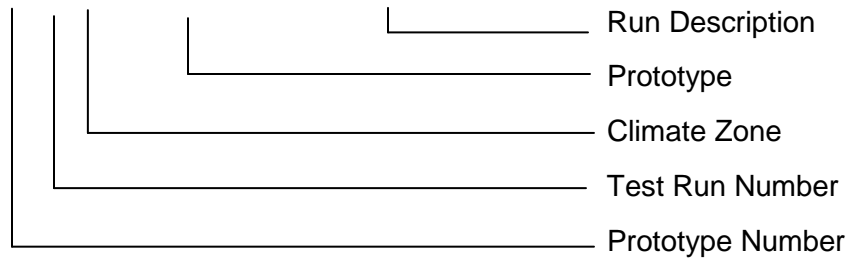
Example:

05 01 15-RetIMed-EnvelopeRoofInsulation



Example for Simple Geometry Test case

02 11 015-OffSml-SG-EnvRoofInsulation



1.3.1 Reporting Test Results

For each test case, the TDV energy use of the modeled building is reported (kBtu/ft²), along with the TDV energy use attributed to the major fuel types (electricity, gas), site energy use, and energy end use intensity for the regulated end uses (cooling, heating, lighting, etc.). The following energy totals are reported:

1. Annual TDV EUI (kBtu/ft²)
2. Annual Site EUI – Electricity (kWh/ft²)
3. Annual SiteEUI – Natural Gas (therm/ft²)
4. Annual Total End Use Site Energy EUI – kBtu/ft²

Site Energy End Uses

5. Site Energy: Heating (kBtu/ft²)
6. Site Energy: Cooling (kBtu/ft²)
7. Site Energy: Interior Lighting (kBtu/ft²)
8. Site Energy: Interior Equipment (kBtu/ft²)
9. Site Energy: Fans (kBtu/ft²) (Airside Fans, does not include tower fans)
10. Site Energy: Pumps (kBtu/ft²)
11. Site Energy: Towers (kBtu/ft²) Water heating (kBtu/ft²)
12. **TDV % Variation** – this field is used for the compliance test
13. Total End Use Site Energy % - percentage change in site energy use
14. Pass/Fail – test fails if it does not meet passing criteria
15. Unmet load hours – these are defined as the zone with the most unmet load hours

- a. Reference Model Occupied Unmet Load Hours
- b. Applicant Model Occupied Unmet Load Hours
- c. Reference Model Number of Zones with excess unmet load hours (>150)
- d. Applicant Model Number of Zones with excess unmet load hours (>150)

1.3.2 TDV Variation Test

Compiled results shall include annual site energy consumption for each end-use, overall site energy consumption, total unmet load hours and annual TDV and % variation of annual TDV and total end use site energy.

The annual TDV % variation shall be calculated using the formula:

$$TDV_{\%} = (TDV_b - TDV_n) / TDV_b$$

Where, $TDV_{\%}$ is the TDV % variation,

TDV_n is the annual TDV for test case number n and

TDV_b is the annual TDV for the base case run.

In order to be accepted, the applicant software shall fulfill the passing criteria below:

The change in energy for each test case must be in the same direction as the Reference Method test case result, and must be equal to the Reference Method test case percentage change in TDV energy, plus or minus 0.5% of baseline TDV energy.

1.3.3 Software Sensitivity Test Cases

Test cases assess the energy impact of one or more of the building or system input characteristics on the baseline model. Each test suite consists of a series of unique test cases aimed to test the impact of a specific characteristic on building energy performance. Simulations are grouped according to test criteria and sub-grouped based on the reference model type to allow for direct comparison of results. For each test case, the applicant software will modify the applicant baseline model with specific inputs as described in the Test Case description section.

The test cases are simulated on multiple California weather files to evaluate the sensitivity of the building or system input to extremes in climate. Results of the test case runs and the TDV percent variation over the baseline run shall be compiled and compared against the reference results.

Detailed descriptions of the Standard Design models are provided in the 2016 Nonresidential ACM Reference Manual. Reference Method input files for all baseline and test case models are available from the California Energy Commission upon requested. Details on each Test Description can also be found in the 2016 Nonresidential ACM Reference Manual.

Table 1 – Baseline Runs for Sensitivity Test Cases

Test Case Name	Baseline	Description
050115-RetlMed-EnvelopeRoofInsulation	050015-RetlMed-Baseline	Decrease overall U value of Roof compared to baseline case
050215-RetlMed-EnvelopeWallInsulation	050015-RetlMed-Baseline	Decrease overall U value of Exterior Wall compared to baseline case
050315-RetlMed-EnvelopeHeavy	050015-RetlMed-Baseline	Change Roof and Wall construction assembly to Wood Framed Roof and Heavy Mass wall.
050416-RetlMed-EnvelopeRoofInsulation	050016-RetlMed-Baseline	Decrease overall U value of Roof compared to baseline case
050516-RetlMed-EnvelopeWallInsulation	050016-RetlMed-Baseline	Decrease overall U value of Exterior Wall compared to baseline case
050616-RetlMed-EnvelopeHeavy	050016-RetlMed-Baseline	Change Roof and Wall construction assembly to Wood Framed Roof and Heavy Mass wall.
050706-RetlMed-EnvelopeRoofInsulation	050006-RetlMed-Baseline	Decrease overall U value of Roof compared to baseline case
050806-RetlMed-RetlMed-EnvelopeWallInsulation	050006-RetlMed-Baseline	Decrease overall U value of Exterior Wall compared to baseline case
050906-RetlMed-RetlMed-EnvelopeHeavy	050006-RetlMed-Baseline	Change Roof and Wall construction assembly to Wood Framed Roof and Heavy Mass wall.
031015-OffMed-FloorSlabInsulation	030015-OffMed-Baseline	Change slab F-factor
031215-OffMed-GlazingWindowU	030015-OffMed-Baseline	Decrease SHGC of windows by 20% compared to baseline case
031315-OffMed-GlazingWindowSHGC	030015-OffMed-Baseline	Decrease U value & SHGC of windows by 20% compared to baseline case
031415-OffMed-GlazingWindowUSHGC	030015-OffMed-Baseline	Change Floor slab F factor of perimeter zones in the bottom floor to 0.45 0.46
031516-OffMed-FloorSlabInsulation	030016-OffMed-Baseline	Increase Exterior Wall Infiltration by 10% compared to baseline case
031716-OffMed-GlazingWindowU	030016-OffMed-Baseline	Decrease SHGC of windows by 20% compared to baseline case
031816-OffMed-GlazingWindowSHGC	030016-OffMed-Baseline	Decrease U value & SHGC of windows by 20% compared to baseline case
031916-OffMed-GlazingWindowUSHGC	030016-OffMed-Baseline	Change Floor slab F factor of perimeter zones in the bottom floor to 0.45 0.46
032006-OffMed-FloorSlabInsulation	030006-OffMed-Baseline	Increase Exterior Wall Infiltration by 10% compared to baseline case
032206-OffMed-GlazingWindowU	030006-OffMed-Baseline	Decrease SHGC of windows by 20% compared to baseline case
032306-OffMed-GlazingWindowSHGC	030006-OffMed-Baseline	Decrease U value & SHGC of windows by 20% compared to baseline case
032406-OffMed-	030006-OffMed-Baseline	Reduce window area

GlazingWindowUSHGC		
042507-OffLrg-WWR20%	040007-OffLrg-Baseline	Increase window area
042607-OffLrg-WWR60%	040007-OffLrg-Baseline	
042801-OffLrg-WWR20%	040001-OffLrg-Baseline	Increase window area
042901-OffLrg-WWR60%	040001-OffLrg-Baseline	Decrease LPD by 20% compared to baseline case
033015-OffMed-LightingLowLPD	030015-OffMed-Baseline	Increase LPD by 20% compared to baseline case
033115-OffMed-LightingHighLPD	030015-OffMed-Baseline	Decrease LPD by 20% compared to baseline case
033216-OffMed-LightingLowLPD	030016-OffMed-Baseline	Increase LPD by 20% compared to baseline case
033316-OffMed-LightingHighLPD	030016-OffMed-Baseline	Decrease LPD by 20% compared to baseline case
033406-OffMed-LightingLowLPD	030006-OffMed-Baseline	Increase LPD by 20% compared to baseline case
033506-OffMed-LightingHighLPD	030006-OffMed-Baseline	Decrease EPD by 20% compared to baseline case
044207-OffLrg-Daylighting Cont.DimHighVT	040007-OffLrg-Baseline	Change daylighting controls in Primary and Secondary daylit areas
044307-OffLrg-Daylighting StepDim	040007-OffLrg-Baseline	Change daylighting controls in Primary and Secondary daylit areas and increase visible transmittance
044407-OffLrg-Daylighting StepDimHighVT	040007-OffLrg-Baseline	Increase Visible Transmittance of windows compared to baseline case. Reduce window area
044507-OffLrg-Daylighting WWR20Cont.DimHighVT	042507-OffLrg-WWR20%	Change daylighting controls in Primary and Secondary daylit areas. Reduce window area
044607-OffLrg-Daylighting WWR20StepDim	042507-OffLrg-WWR20%	Change daylighting controls in Primary and Secondary daylit areas and increase visible transmittance of windows. Reduce window area
044707-OffLrg-47CZ07LargeOffice Daylighting WWR20StepDimHighVT	042507-OffLrg-WWR20%	Increase Visible Transmittance compared to baseline case. Increase window area
044807-OffLrg-48CZ07LargeOffice Daylighting WWR60Cont.DimHighVT	042607-OffLrg-WWR60%	Change daylighting controls in Primary and Secondary daylit areas. Increase window area
044907-OffLrg-49CZ07LargeOffice Daylighting WWR60StepDim	042607-OffLrg-WWR60%	Change daylighting controls in Primary and Secondary daylit areas and increase visible transmittance of windows. Increase window area
045007-OffLrg-50CZ07LargeOffice Daylighting WWR60StepDimHighVT	042607-OffLrg-WWR60%	Increase Visible Transmittance of windows compared to baseline case
045101-OffLrg-51CZ01LargeOffice Daylighting	040001-OffLrg-Baseline	Change daylighting controls in Primary and Secondary daylit areas

Cont.DimHighVT		
045201-OffLrg-52CZ01LargeOffice Daylighting StepDim	040001-OffLrg-Baseline	Change daylighting controls in Primary and Secondary daylit areas and increase visible transmittance of windows
045301-OffLrg-53CZ01LargeOffice Daylighting StepDimHighVT	040001-OffLrg-Baseline	Increase Visible Transmittance of windows compared to baseline case. Reduce window area
045401-OffLrg-Daylighting WWR20Cont.DimHighVT	042801-OffLrg-WWR20%	Change daylighting controls in Primary and Secondary daylit areas. Reduce window area
045501-OffLrg-Daylighting WWR20StepDim	042801-OffLrg-WWR20%	Change daylighting controls in Primary and Secondary daylit areas and increase visible transmittance of windows. Reduce window area
045601-OffLrg-Daylighting WWR20StepDimHighVT	042801-OffLrg-WWR20%	Increase Visible Transmittance of windows compared to baseline case. Increase window area
045701-OffLrg-Daylighting WWR60Cont.DimHighVT	042901-OffLrg-WWR60%	Change daylighting controls in Primary and Secondary daylit areas. Increase window area
045801-OffLrg-Daylighting WWR60StepDim	042901-OffLrg-WWR60%	Change daylighting controls in Primary and Secondary daylit areas and increase visible transmittance of windows. Increase window area
045901-OffLrg-Daylighting WWR60StepDimHighVT	042901-OffLrg-WWR60%	Increase Visible Transmittance of skylights compared to baseline case
056007-RetlMed-Daylighting SRRBaseHighVT	050007-RetlMed-Baseline	Increase skylight area.
056107-RetlMed-Daylighting SRR3.04	050007-RetlMed-Baseline	Increase skylight area and visible transmittance of skylights compared to baseline case.
056207-RetlMed-Daylighting SRR3.04HighVT	050007-RetlMed-Baseline	Increase Visible Transmittance of skylights compared to baseline case
056301-RetlMed-Daylighting SRRBaseHighVT	050001-RetlMed-Baseline	Increase skylight area
056401-RetlMed-Daylighting SRR3.04	050001-RetlMed-Baseline	Increase skylight area and visible transmittance of skylights compared to baseline case
056501-RetlMed-Daylighting SRR3.04HighVT	050001-RetlMed-Baseline	Increase ductloss in the zones served by Pacakaged Single Zone systems.
056616-RetlMed-HVAC DuctLoss	050016-RetlMed-BaselineDuctLoss	
056716-RetlMed-HVAC DuctLoss	050006-RetlMed-BaselineDuctLoss	Increase ductloss in the zones served by Pacakaged Single Zone systems.
036815-OffMed-HVACPVAV Design	030015-OffMed-Baseline	Change static pressure and motor efficiency of all VAV fans. See details below

036915-OffMed-HVACPVAV SATControl	030015-OffMed-Baseline	Change supply air temperature reset based on Outside air. See details below
037015-OffMed-HVACPVAV VAVControl	030015-OffMed-Baseline	Change VAV damper control to dual maximum.
037115-OffMed-HVACPVAV EconomizerType	030015-OffMed-Baseline	Change Economizer Type to Fixed Dry bulb with 70 F high limit
037216-OffMed-HVACPVAV Design	030016-OffMed-Baseline	Change static pressure and motor efficiency of all VAV fans. See details below
037316-OffMed-HVACPVAV SATControl	030016-OffMed-Baseline	Change supply air temperature reset based on Outside air. See details below
037416-OffMed-HVACPVAV VAVControl	030016-OffMed-Baseline	Change VAV damper control to dual maximum
037516-OffMed-HVACPVAV EconomizerType	030016-OffMed-Baseline	Change Economizer Type to Fixed Dry bulb with 70 F high limit
037606-OffMed-HVACPVAV Design	030006-OffMed-Baseline	Change static pressure and motor efficiency of all VAV fans. See details below
037706-OffMed-HVACPVAV SATControl	030006-OffMed-Baseline	Change supply air temperature reset based on Outside air. See details below
037806-OffMed-HVACPVAV VAVControl	030006-OffMed-Baseline	Change VAV damper control to dual maximum.
037906-OffMed-HVACPVAV EconomizerType	030006-OffMed-Baseline	Change Economizer Type to Fixed Dry bulb with 70 F high limit
048015-OffLrg-HVACVAV ChillerCOP	040015-OffLrg-Baseline	Increase Chiller COP compared to baseline case
048115-OffLrg-HVACVAV CHWdeltaT	040015-OffLrg-Baseline	Change the Chilled water loop design temperature difference
048215-OffLrg-HVACVAV CWSetpoint	040015-OffLrg-Baseline	Change condenser water setpoint reset based on Outdoor air wet bulb temperature
048315-OffLrg-HVACVAV TowerEff	040015-OffLrg-Baseline	Change Tower Efficiency
048416-OffLrg-HVACVAV ChillerCOP	040016-OffLrg-Baseline	Increase Chiller COP
048516-OffLrg-HVACVAV CHWdeltaT	040016-OffLrg-Baseline	Change the Chilled water loop design temperature difference
048616-OffLrg-HVACVAV CWSetpoint	040016-OffLrg-Baseline	Change condenser water setpoint reset based on Outdoor air wet bulb temperature
048706-OffLrg-HVACVAV TowerEff	040016-OffLrg-Baseline	Change Tower Efficiency
048806-OffLrg-HVACVAV ChillerCOP	040006-OffLrg-Baseline	Increase Chiller COP
048906-OffLrg-HVACVAV	040006-OffLrg-Baseline	Change the Chilled water loop design

CHWdeltaT		temperature difference
049006-OffLrg-HVACVAV CWSetpoint	040006-OffLrg-Baseline	Change condenser water setpoint reset based on Outdoor air wet bulb temperature
049106-OffLrg-HVACVAV TowerEff	040006-OffLrg-Baseline	Change condenser water setpoint reset based on Outdoor air wet bulb temperature
109215-RetlStrp-HVACPSZ DXCOP	100015-RetlStrp-BaselinePSZ	Increase COP of DX coil
109315-RetlStrp-HVACPSZ HeatEff	100015-RetlStrp-BaselinePSZ	Increase efficiency of the Heating coil
109415-RetlStrp-HVACPSZ EconomizerControl	100015-RetlStrp-BaselinePSZ	Change Economizer from Integrated as in baseline to NonIntegrated.
109516-RetlStrp-HVACPSZ DXCOP	100016-RetlStrp-BaselinePSZ	Increase COP of DX coil
109616-RetlStrp-HVACPSZ HeatEff	100016-RetlStrp-BaselinePSZ	Increase efficiency of the Heating coil
109716-RetlStrp-HVACPSZ EconomizerControl	100016-RetlStrp-BaselinePSZ	Change Economizer from Integrated as in baseline to NonIntegrated.
109806-RetlStrp-HVACPSZ DXCOP	100006-RetlStrp-BaselinePSZ	Increase COP of DX coil
109906-RetlStrp-HVACPSZ HeatEff	100006-RetlStrp-BaselinePSZ	Increase efficiency of the Heating coil
1010006-RetlStrp-HVACPSZ EconomizerControl	100006-RetlStrp-BaselinePSZ	Change Economizer from Integrated as in baseline to NonIntegrated.
1010115-RetlStrp-HVACPTAC DXCOP	100015-RetlStrp-BaselinePTAC	Increase COP of DX coil
1010215-RetlStrp-HVACPTAC DXCOP	100016-RetlStrp-BaselinePTAC	Increase COP of DX coil
1010315-RetlStrp-HVACPTAC DXCOP	100006-RetlStrp-BaselinePTAC	Increase COP of DX coil
1010415-RetlStrp-HVACPTAC vsFanCoil	100015-RetlStrp-BaselinePTAC	Comparison of PTAC system with Fan Coil system
1010516-RetlStrp-HVACPTAC vsFanCoil	100016-RetlStrp-BaselinePTAC	Comparison of PTAC system with Fan Coil system
1010606-RetlStrp-HVACPTAC vsFanCoil	100006-RetlStrp-BaselinePTAC	Comparison of PTAC system with Fan Coil system
0211015-OffSml-SG- EnvRoofInsulation	0200015-OffSml-SG-Baserun	Decrease overall U value of Roof by 20% compared to baserun case
0211116-OffSml-SG- EnvRoofInsulation	0200016-OffSml-SG-Baserun	Decrease overall U value of Roof by 20% compared to baserun case
0211206-OffSml-SG- EnvRoofInsulation	0200006-OffSml-SG-Baserun	Decrease overall U value of Roof by 20% compared to baserun case
0211315-OffSml-SG- EnvWallInsulation	0200015-OffSml-SG-Baserun	Decrease overall U value of Exterior Wall by 20% compared to baseline case
0211416-OffSml-SG- EnvWallInsulation	0200016-OffSml-SG-Baserun	Decrease overall U value of Exterior Wall by 20% compared to baseline case
0211506-OffSml-SG-	0200006-OffSml-SG-Baserun	Decrease overall U value of Exterior

EnvWallInsulation		Wall by 20% compared to baseline case
0311615-OffMed-SG-WWR40	0300015-OffMed-SG-Baseline	Change WWR from 33% to 40%
0311715-OffMed-SG-WWR20	0300015-OffMed-SG-Baseline	Change WWR from 33% to 20%
0311816-OffMed-SG-WWR40	0300016-OffMed-SG-Baseline	Change WWR from 33% to 40%
0311916-OffMed-SG-WWR20	0300016-OffMed-SG-Baseline	Change WWR from 33% to 20%
0312006-OffMed-SG-WWR40	0300006-OffMed-SG-Baseline	Change WWR from 33% to 40%
0312106-OffMed-SG-WWR20	0300006-OffMed-SG-Baseline	Change WWR from 33% to 20%
0312215-OffMed-SG-WinUSHGC	0300015-OffMed-SG-Baseline	Decrease U value of windows by 20% compared to baseline case
0312316-OffMed-SG-WinUSHGC	0300016-OffMed-SG-Baseline	Decrease SHGC of windows by 20% compared to baseline case
0312406-OffMed-SG-WinUSHGC	0300006-OffMed-SG-Baseline	Decrease U value & SHGC of windows by 20% compared to baseline case
0511615RetlMed-SG-SRR5	050015RetlMed-SG-Baseline	Change SRR to 5%
0511716RetlMed-SG-SRR5	050016RetlMed-SG-Baseline	Change SRR to 5%
0511806RetlMed-SG-SRR5	050006RetlMed-SG-Baseline	Change SRR to 5%
0511915RetlMed-SG-SRR1	050015RetlMed-SG-Baseline	Change SRR to 1%
0512016RetlMed-SG-SRR1	050016RetlMed-SG-Baseline	Change SRR to 1%
0512106RetlMed-SG-SRR1	050006RetlMed-SG-Baseline	Change SRR to 1%
0512215RetlMed-SG-SkyUSHGC	050015RetlMed-SG-Baseline	Decrease U value of skylights by 20% compared to baseline case
0512316RetlMed-SG-SkyUSHGC	050016RetlMed-SG-Baseline	Decrease U value of skylights by 20% compared to baseline case
0512406RetlMed-SG-SkyUSHGC	050006RetlMed-SG-Baseline	Decrease U value of skylights by 20% compared to baseline case